

M800 Series

Hand Operated Stackers

Parts List

Model Number _____

Serial # _____

Date placed in service _____

IMPORTANT: READ CAREFULLY
BEFORE INSTALLING OR OPERATING LIFT

Part orders are subject to a \$50 minimum charge



The Presto Five Year Warranty

Presto Lifts, Inc. warrants all of its products against defects in the welded structural frame and, if applicable, scissor legs from faulty material and workmanship for a period of five years from the date of invoice. To read more about the warranty on this equipment, please turn to the back inside cover of this owner's manual.

This manual was current at the time of printing. To obtain the latest, most updated version, please contact the Customer Service Department or go to our website: www.PrestoLifts.com -- you will find a complete list of current owner's manuals to print.

CONTENTS

SECTION 1:	
Operation.....	4
SECTION 2:	
Maintenance.....	4
SECTION 3:	
Servicing.....	4
ORDERING REPLACEMENT PARTS.....	12
RESTOCKING POLICY & RGA POLICY.....	13
RETURN MATERIALS AUTHORIZATION (RMA) PROCEDURES.....	14
WARRANTY.....	15

LIST OF FIGURES:

Figure 1: Pump Diagram.....	5
Figure 2: Component Parts.....	6
Figure 3: Hydraulic Diagram.....	7
Figure 4: Backplate Assembly Diagram.....	8
Figure 5: Fork Weldment Diagram.....	9
Figure 6: Portability Package Diagram.....	10
Figure 7: Label Location.....	11

LIST OF TABLES:

Table 1: Hydraulic Oil Specifications.....	12
--	----

SECTION 1 **OPERATION**

Operation of Presto Hydraulic Lifts is very simple - as is their construction. They require very little maintenance. Reasonable care will result in excellent trouble-free performance.

To Operate:

1. To raise lift, close Release lever turn clockwise.
2. To lower lift, open Release lever turn counter-clockwise.

SECTION 2 **MAINTENANCE**

Grease wheels and casters at least once a month to maintain easy roll of lift.

Use only Hydraulic Oil (Conoco Super Hydraulic 32) in the hydraulic system. NEVER NEVER USE HYDRAULIC BRAKE FLUID.

Do not overload your lift.

SECTION 3 **SERVICING**

IF THE LIFT DOES NOT RISE TO FULL HEIGHT - Check for leaks or shortage of oil. Maintain the proper oil level.

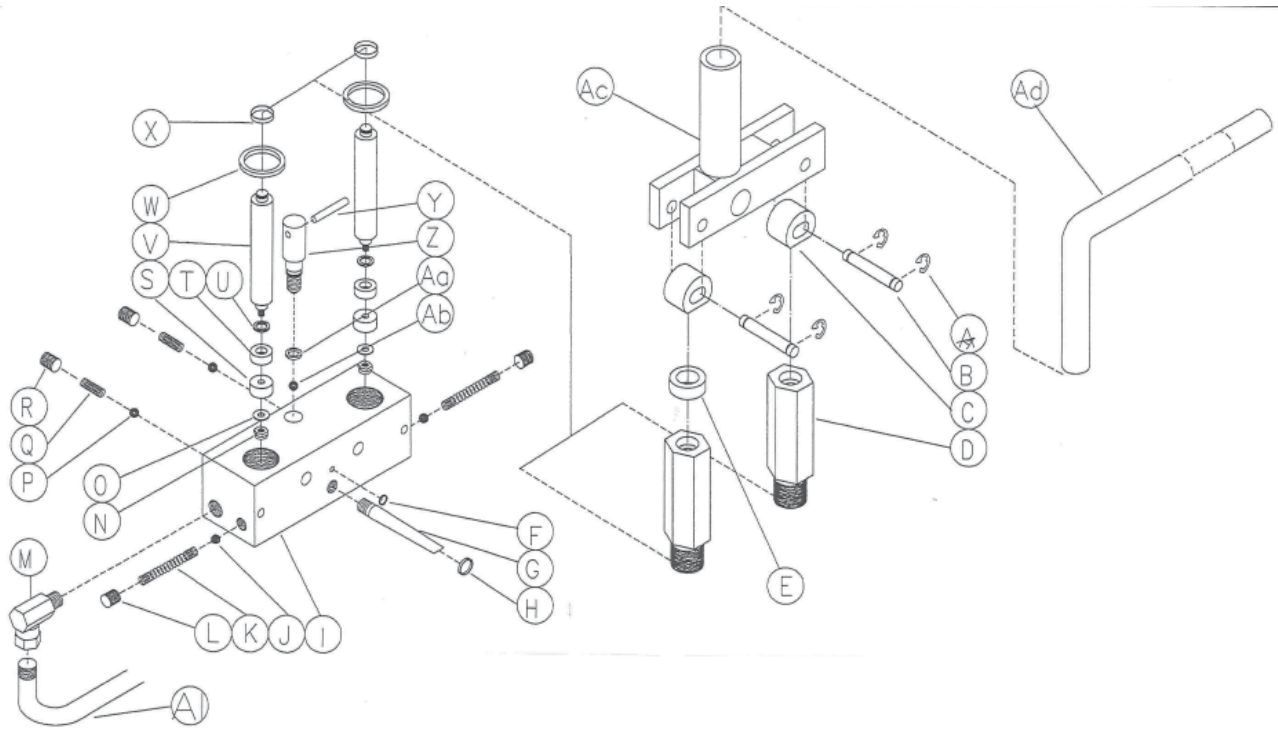
To check oil level, follow these instructions: Remove Breather Plug on top of Oil Tank. Oil level should be about 3" from Top of Tank.

IF THE LIFT TENDS TO CREEP DOWNWARD UNDER A LOAD - A speck of dirt may be obstructing the seating of the valve and allowing leakage.

To correct, follow these instructions: Raise lift to full lifting height then lower it to lowest point of lift. It may be necessary to do this five or six times. In lowering the lift, lower it in stages, that is, lower the lift six inches to a foot at a time. This will dislodge the dirt and the lift will operate properly.

FIGURE 1: PUMP DIAGRAM

Contact Parts Department with what parts are needed. Individual components will be sold as part of repair kits.



Item	Print	P/N	Item	Print	P/N
A	44	PSL28A	R	34	N1200
B	45	M423	S	37	M448
C	46	M404-3	T	38	M407A
D	132	L550	U	39	M407B
E	135	R733	V	131	R713
F	39	M407B	W	41	M443
G	90	R730	X	43	M445
H	127	R709	Y	134	R720-1
I	128	R707A	Z	133	R720
J	29	M439	Aa	39	R721
K	125	R725	Ab	29	M439
L	34	N1200	Ac	136	*R703
M	91	R723	Ad	137	R702
N	35	M446	Al	145	H116
O	36	M447			
P	29	M439			
Q	130	R728			

FIGURE 2: COMPONENT PARTS

Contact Parts Department with what parts are needed. Individual components will be sold as part of repair kits.

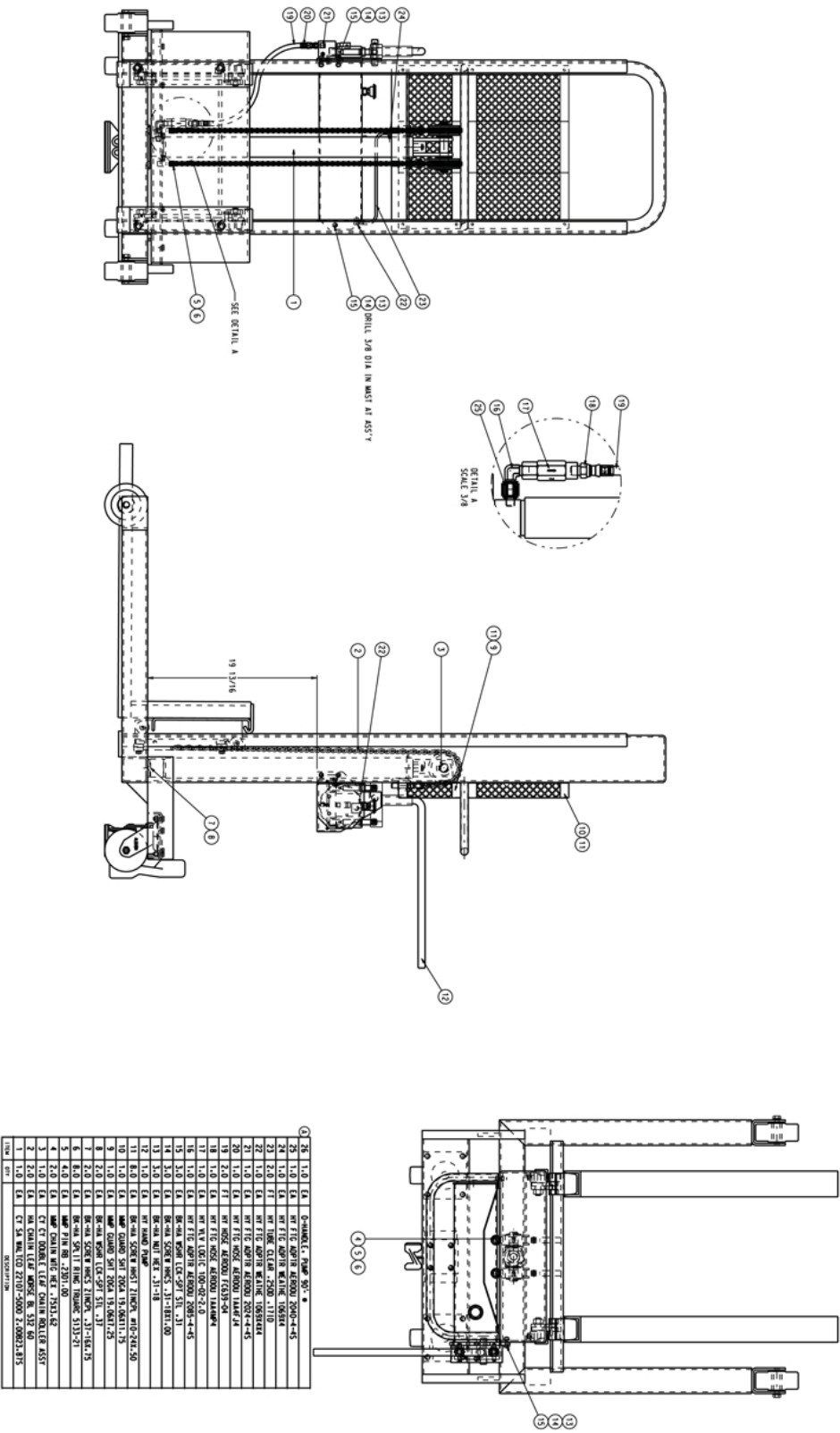
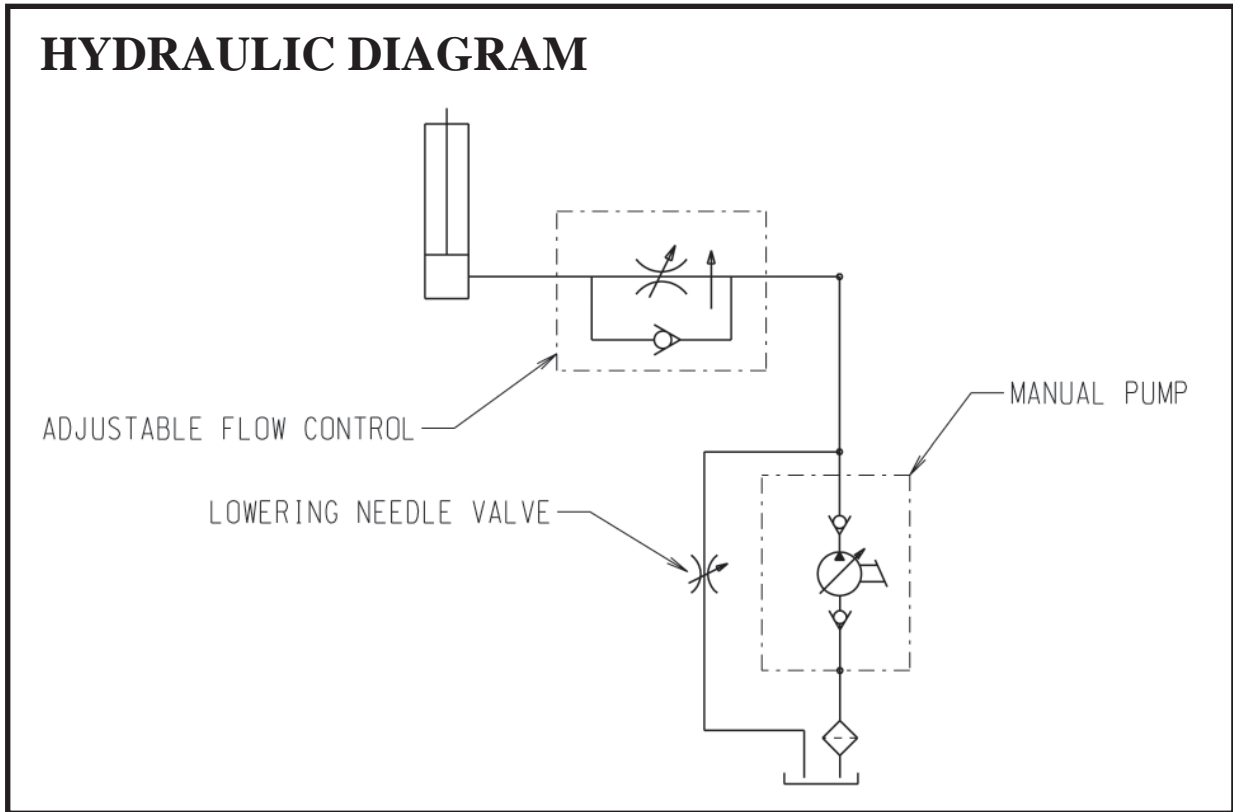


FIGURE 3: HYDRAULIC CYLINDER ASSEMBLY FOR ALL ELECTRIC AND BATTERY OPERATED UNIT



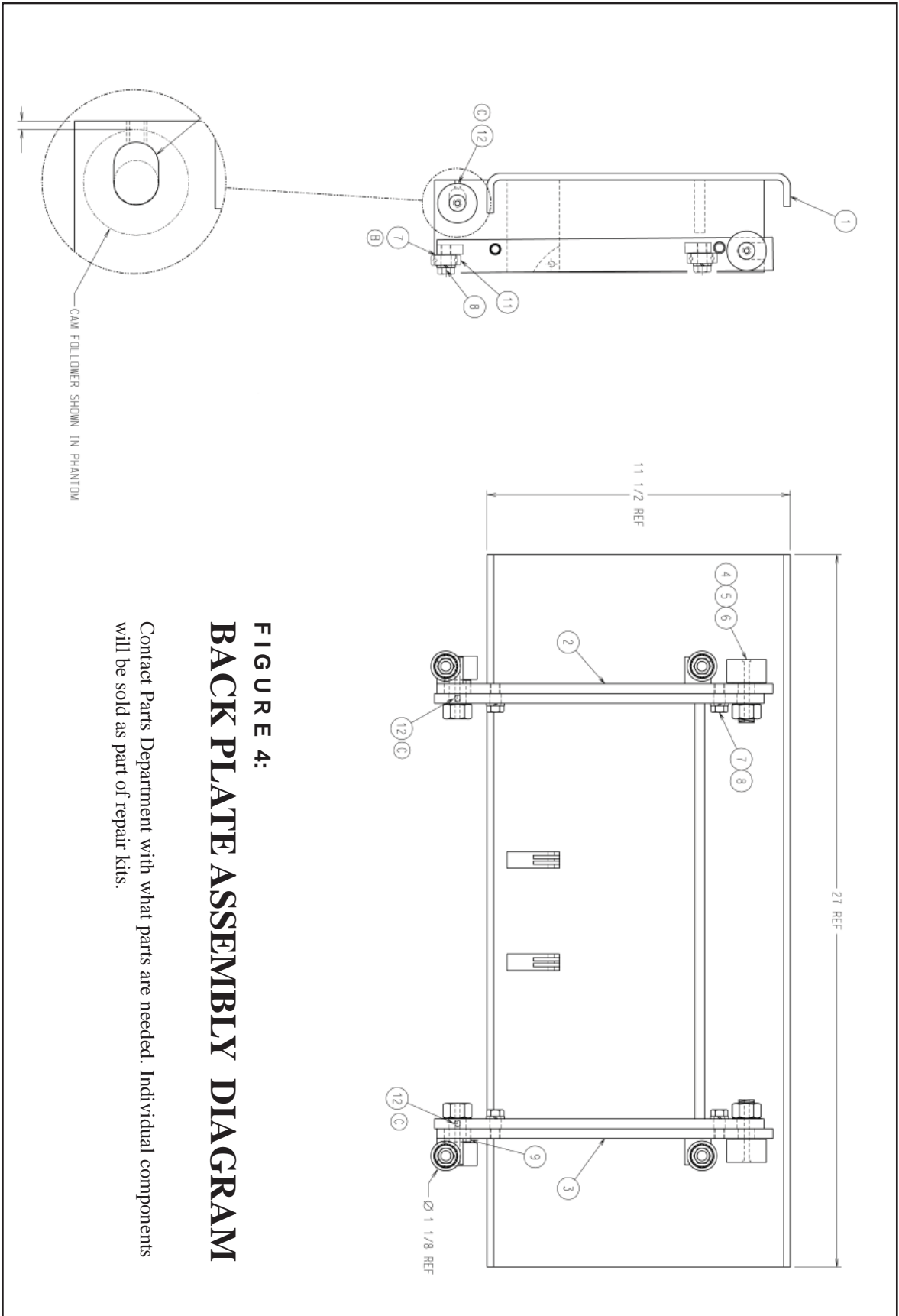


FIGURE 4:
BACK PLATE ASSEMBLY DIAGRAM

Contact Parts Department with what parts are needed. Individual components will be sold as part of repair kits.

FIGURE 5: FORK WELDMENT DIAGRAM

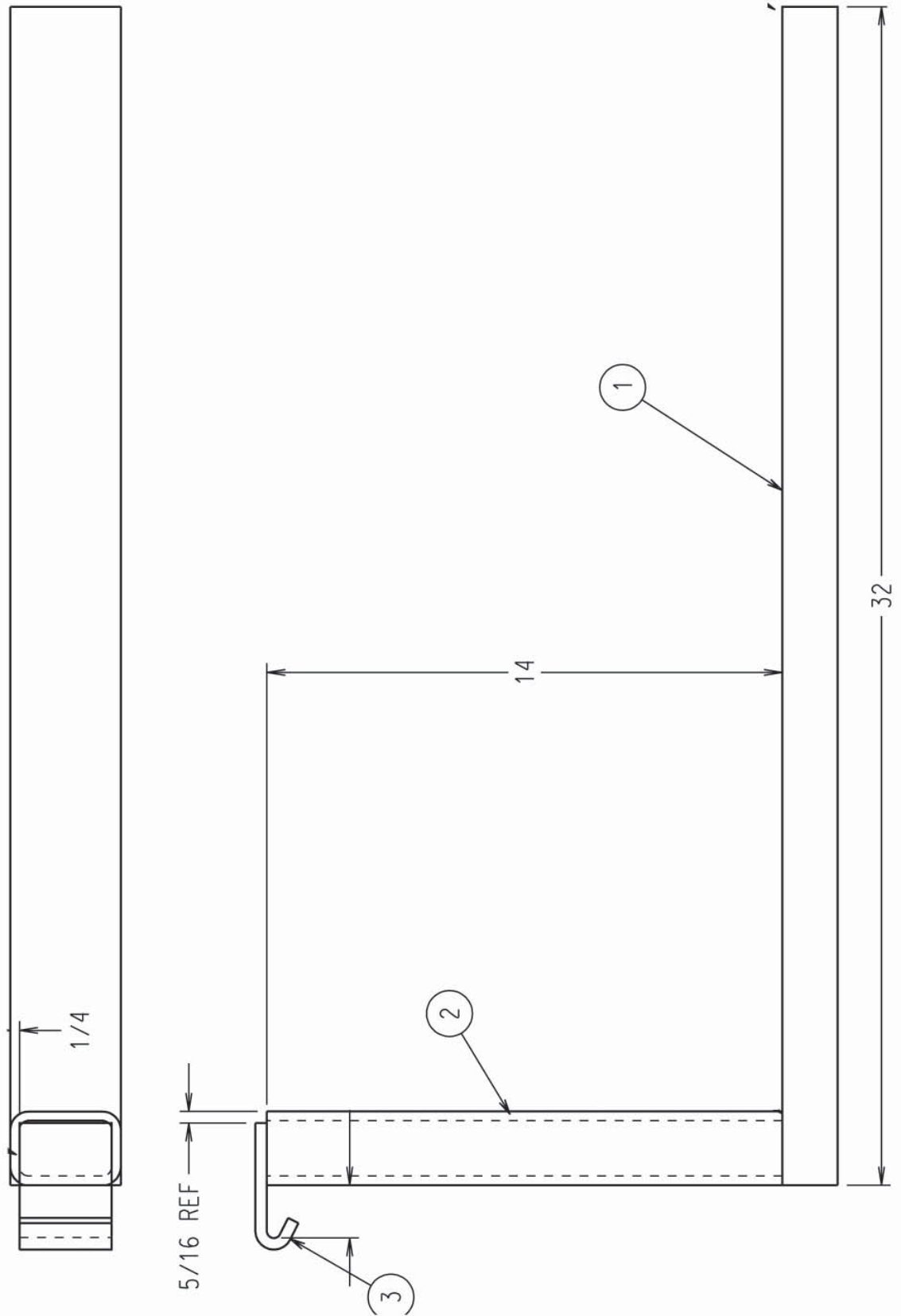
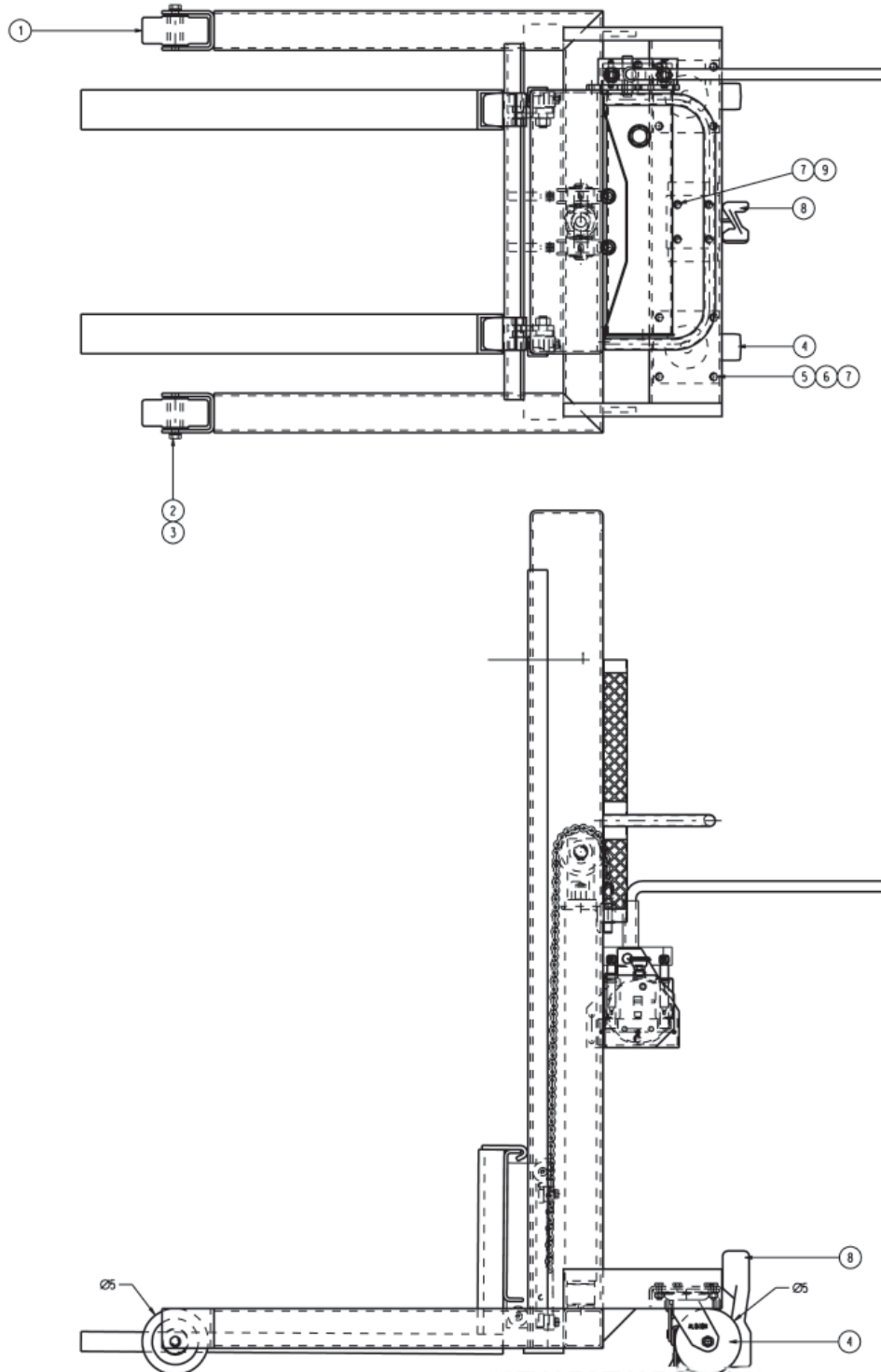


FIGURE 6: PORTABILITY PACKAGE DIAGRAM

Contact Parts Department with what parts are needed. Individual components will be sold as part of repair kits.



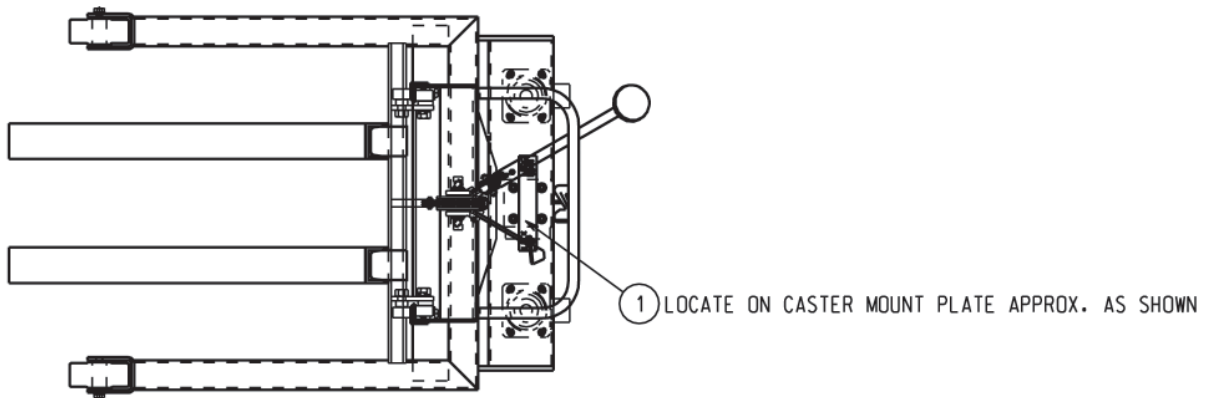


FIGURE 7: LABEL LOCATION DIAGRAM

Contact Parts Department with what parts are needed. Individual components will be sold as part of repair kits.

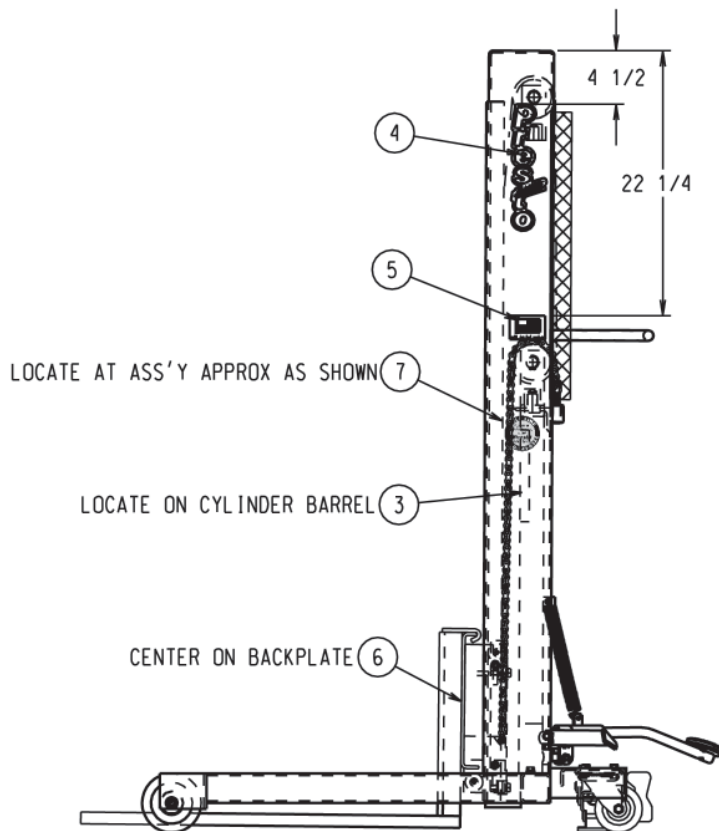


Table 1 – Hydraulic Oil Specifications

If the lift will be used at normal ambient temperatures, Presto Lifts supplies the unit with Citgo AW 32 oil. This may be replaced by any other good quality oil with 150 SSU at 100° F and rust and oxidation inhibitors and anti-wear properties.

If the lift will be used at ambient temperatures below 0°F, use aircraft hydraulic oil. Use Type 15 aircraft hydraulic oil.

The following are equivalent to CONOCO SUPER HYDRAULITC 32:

TYPE	MANUFACTURER
DTE 24	EXXON/MOBIL
CITGO AW32	CITGO
NUTO H32	EXXON/MOBIL
AMOCO AW32	CHEVRON (AMOCO CO.)

CAUTION!

It is very important to keep the hydraulic oil free of dirt, dust, metal chips, water, and other contamination. Most of the problems with hydraulic systems are caused by contamination in the oil.

Ordering Replacement Parts

Presto Lifts has carefully chosen the components in your unit to be the best available for the purpose. Replacement parts should be identical to the original equipment. Presto Lifts will not be responsible for equipment failures resulting from the use of incorrect replacement parts or from unauthorized modifications to the unit.

Presto Lifts can supply all replacement parts for your lift. With your order, please include the model number and the serial number of the unit. You can find these numbers on the name plate. This plate is located within the cabinet, or on the angle iron cylinder cross support.

To order replacement parts, please call the Presto Parts Department. Parts are shipped subject to the following terms:

- FOB factory
- Returns only with the approval of our parts department.
- Credit cards preferred (except parts covered by warranty).
- Freight collect for truck (except parts covered by warranty).
- Freight – prepaid and invoice for small parcel shipments (except parts covered by warranty).

Parts replaced under warranty are on a “charge-credit” basis. We will invoice you when we ship the replacement part, then credit you when you return the worn or damaged part.

Presto Parts Department
 21 Park Street, Attleboro, MA 02703
 Telephone: 800-343-9322 • FAX: 888-788-6496
 Email: service@PrestoLifts.com
www.PrestoLifts.com

PARTS

Standard parts may be returned with a 20% restocking fee or \$35.00 net, whichever is greater. Modified or custom-engineered parts are not returnable. Unfortunately, due to potentially concealed damage, all sales of electrical assemblies are final.

QUALITY ISSUES

Should you feel there is a quality problem, please contact the seller to ask questions and gather information on how to rectify the issue. Presto Lift Inc. reserves the right to determine potential credits, as a result of factory defects, based on its inspection of the merchandise.

GENERAL

All products shipped from our factory have passed Quality Assurance inspection and testing. The carrier of choice has signed for, and accepted the product in new working condition. The customer should inspect to ensure it is not received damaged, has no concealed damage or is not incomplete. Parts orders are determined to be complete based upon Presto Lift, Inc. inspection sheets and carrier shipping weights.

RETURN MATERIALS AUTHORIZATION (RMA) PROCEDURES

Although Presto Lift, Inc. is not legally obligated to issue a credit for any merchandise, the RETURN MATERIALS AUTHORIZATION (RMA) PROCEDURE is provided as a courtesy to our customers in the event they do not receive what they wanted.

If a customer wishes to return a Presto Lift, Inc. product, the first step in the process is to request an RMA number from Presto Lift, Inc.'s Customer Service Department. This request must be made on or before the thirtieth (30th) calendar day following the date of Presto Lift, Inc.'s invoice for the merchandise being returned.

The RMA number must appear on the outside of any packaging material for a return to be accepted and processed by Presto Lift, Inc. Customers shipping returns back to Presto Lift, Inc. from the Continental US, Canada and Mexico have fourteen (14) days from the effective date of the RMA to have the merchandise arrive freight prepaid at Presto Lift, Inc. Returns from locations other than the Continental US, Canada and Mexico must be shipped within the fourteen (14) day period to arrive Free On Board (FOB) at Presto Lift Inc as soon as practical. If a customer believes Presto Lift, Inc.'s merchandise is defective, freight will be reimbursed to the original "Bill To" on the invoice if Presto Lift Inc. finds that the merchandise is defective.

Please remember that merchandise with RMAs coming back to Presto Lift Inc. from the Continental US, Canada and Mexico will not be accepted by Presto Lift Inc. if the returned goods do not arrive freight prepaid at Presto Lift Inc. within the fourteen (14) day effective period.

All credits issued are less restocking fees as applicable, plus any assessed outbound/inbound in-transit damages.

Return addresses: please refer to your RMA for the address to which your product should be returned.

Presto Lift Inc.
715 Highway 77
Manila, Arkansas 72442

Telephone: 800-343-9322
Fax: 888-788-6496

Presto Lifts Limited Warranty Policy

Presto Lifts warrants all of its products against defects in the welded structural frame and, if applicable, scissor legs from faulty material and workmanship for a period of five (5) years from the date of invoice.

All batteries are covered for 90 days, they may also be covered by a separate limited warranty. Contact the battery manufacturer for details.

All other components have a limited warranty against defects in faulty material and workmanship for a two (2) year period from the date of invoice date of invoice and 30 day limited warranty on labor. Please note that prior authorization from Presto Lifts is required on all warranty work.

There are no implied warranties of any kind, more specifically, there are no warranties of merchantability or fitness for any particular purpose. Presto Lifts' sole warranty shall be as set forth in this limited warranty.

Presto Lifts will elect to repair or replace a defective component without charge, if any components should become defective within the limited warranty period. Proof of purchase is required for warranty. The charge for shipping the defective component is the responsibility of the buyer and must be accompanied with an RMA number. The shipping charge to return the component to the buyer is the responsibility of Presto Lifts, Inc.

This limited warranty does not cover labor expense for removal or reinstallation of components after thirty days. This limited warranty shall not cover, among other things: damages resulting from foreign matter or water, failure to provide reasonable and necessary maintenance, and if applicable, use of product while charger is plugged into an AC outlet, or failure to follow operating instructions. The limited warranty is not valid for damage resulting from negligence, accident, unreasonable use, abuse or misuse, exceeding data plate capacities or altering the product without Presto Lifts authorization.

Presto Lifts expressly disclaims and excludes any liability for consequential, incidental, indirect or punitive damages or financial loss to people or property resulting from any breach of warranty or the operation or failure of this product.

Presto Lifts makes no representation that this product complies with local, state, or federal safety/product standards codes. Should this product fail to comply in any way with those codes, it shall not be considered a defect of materials or workmanship. Presto Lifts shall not be held liable for any damages resulting from noncompliance. It is the dealer's responsibility to exercise this limited warranty. This limited warranty is provided to the original purchaser (defined as the original end user) and is nontransferable. This constitutes the complete and final agreement involving Presto Lifts and limited warranty obligations for products.

Go Presto LIFTS™

MANY NEEDS REQUIRE
MANY OPTIONS...



Lift
Stik



Post Tables



Double Lift
Table



Lift Table



Portable
Lift



P3



Counterweight
Stacker



Pallet Jack



Pneumatic Lift/Tilt

Call Presto Sales
for stock or customized lift inquiries at

800-343-9322

Email: sales@prestolifts.com



Portable Tilter



Floor Level Lift



Stacker